

Road User Behavior

Richard S. Weeks, PE, PTOE,
State Traffic Safety Engineer

2015 ASCE/ASHE State Conference
September 11, 2015

Toward Zero Deaths by Reducing Crashes for a Safer Arizona



ARIZONA

2014 Strategic Highway Safety Plan

4
Engineering
Education
Enforcement
Emergency Medical Services
E's

2014 SHSP EMPHASIS AREAS

TOP FOCUS EMPHASIS AREAS

SPEEDING AND AGGRESSIVE DRIVING

IMPAIRED DRIVING

OCCUPANT PROTECTION

MOTORCYCLES

DISTRACTED DRIVING

ROADWAY INFRASTRUCTURE AND OPERATIONS

AGE RELATED

HEAVY VEHICLES / BUSES / TRANSIT

NONMOTORIZED USERS

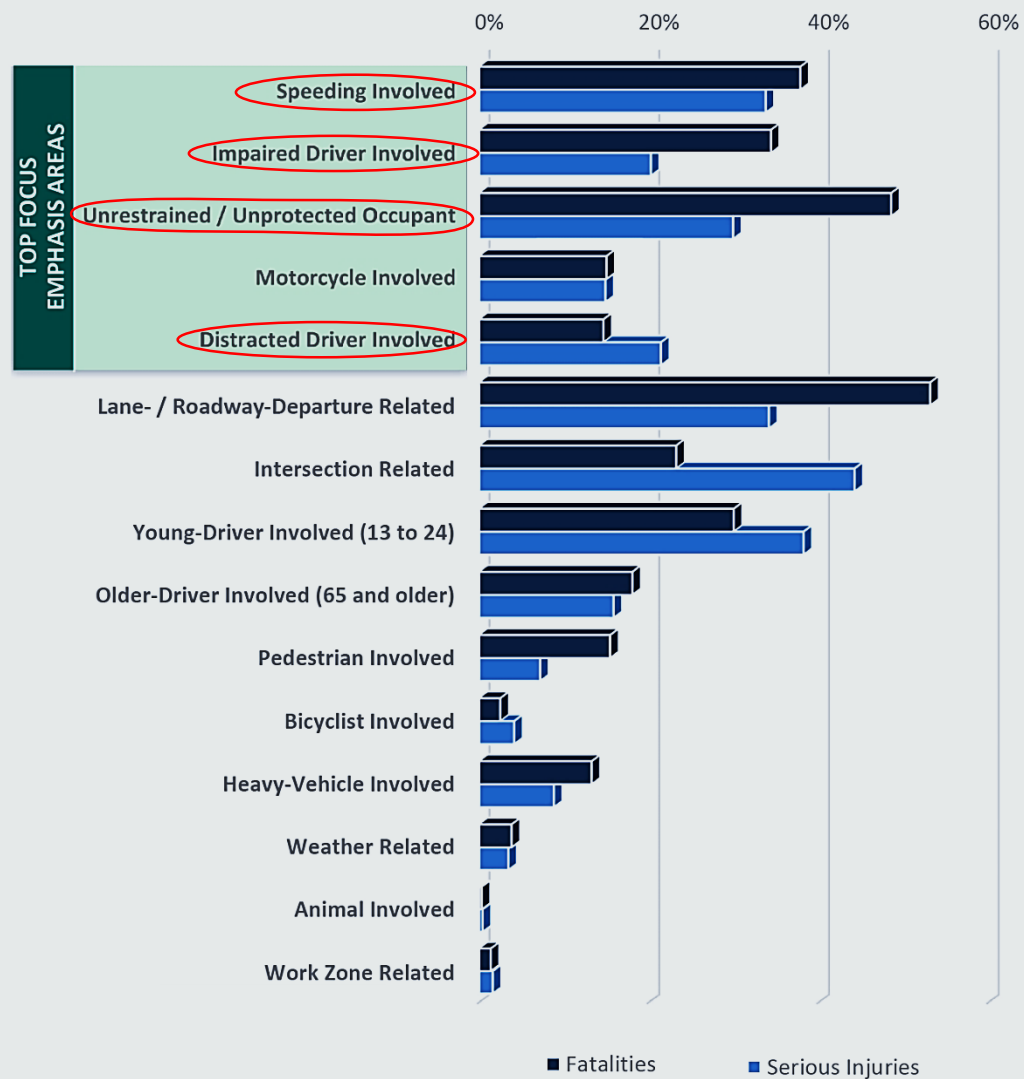
NATURAL RISKS

TRAFFIC INCIDENT MANAGEMENT

INTERJURISDICTIONAL

**Risky
Behavior**

PERCENT OF TOTAL FATALITIES AND SERIOUS INJURIES BY CRASH CHARACTERISTIC



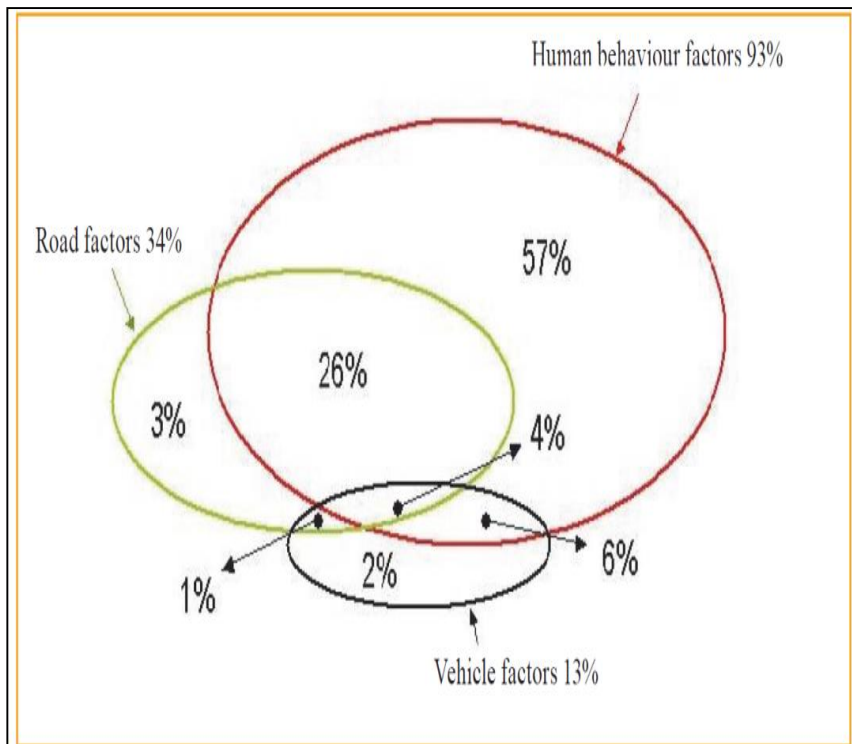
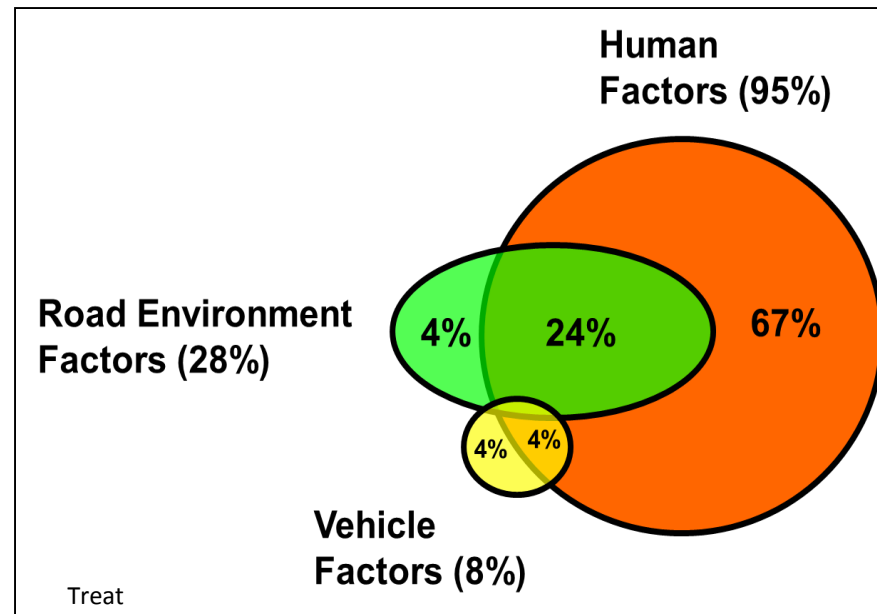


FIGURE 2 – ACCIDENT CONTRIBUTING FACTORS (Source: PIARC Road Safety Manual, 2003)



Treat

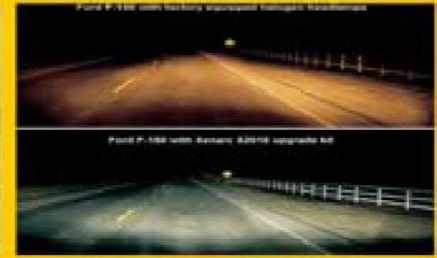
Haddon Matrix

Human

Vehicle

Environment

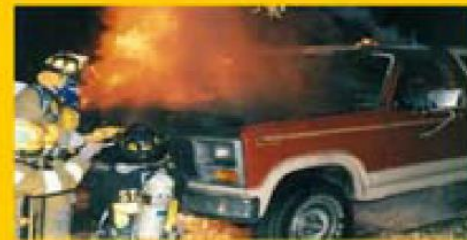
Pre-Event

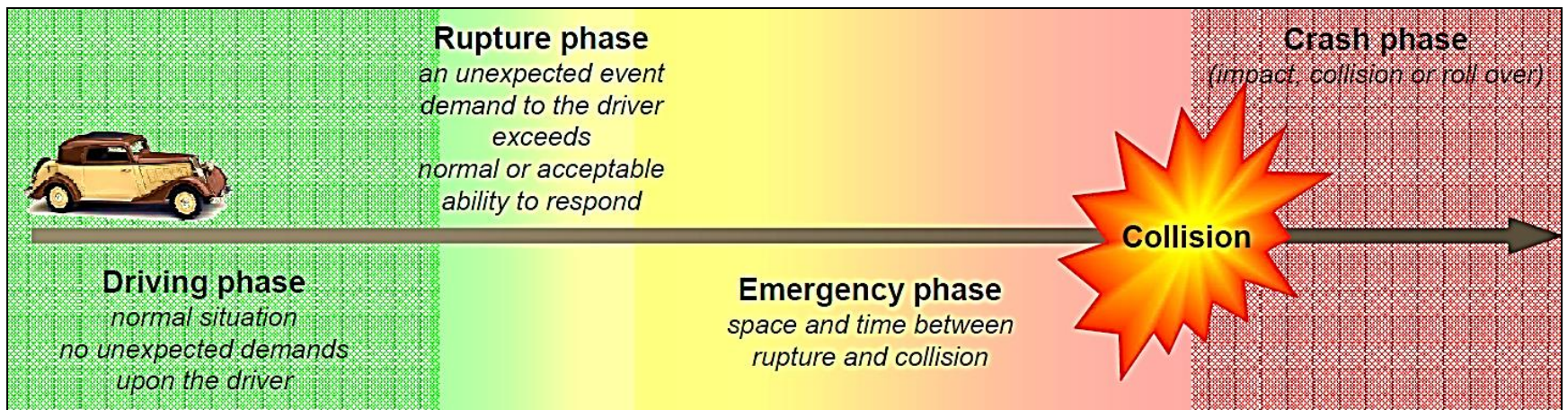


Event



Post-Event





trace-wp2-d2-2-v2.pdf

A MODEL for Human Information Processing

1. Sensory Processing
2. Perception
3. Memory and Cognition
4. Response Selection and Execution
5. Feedback
6. Attention

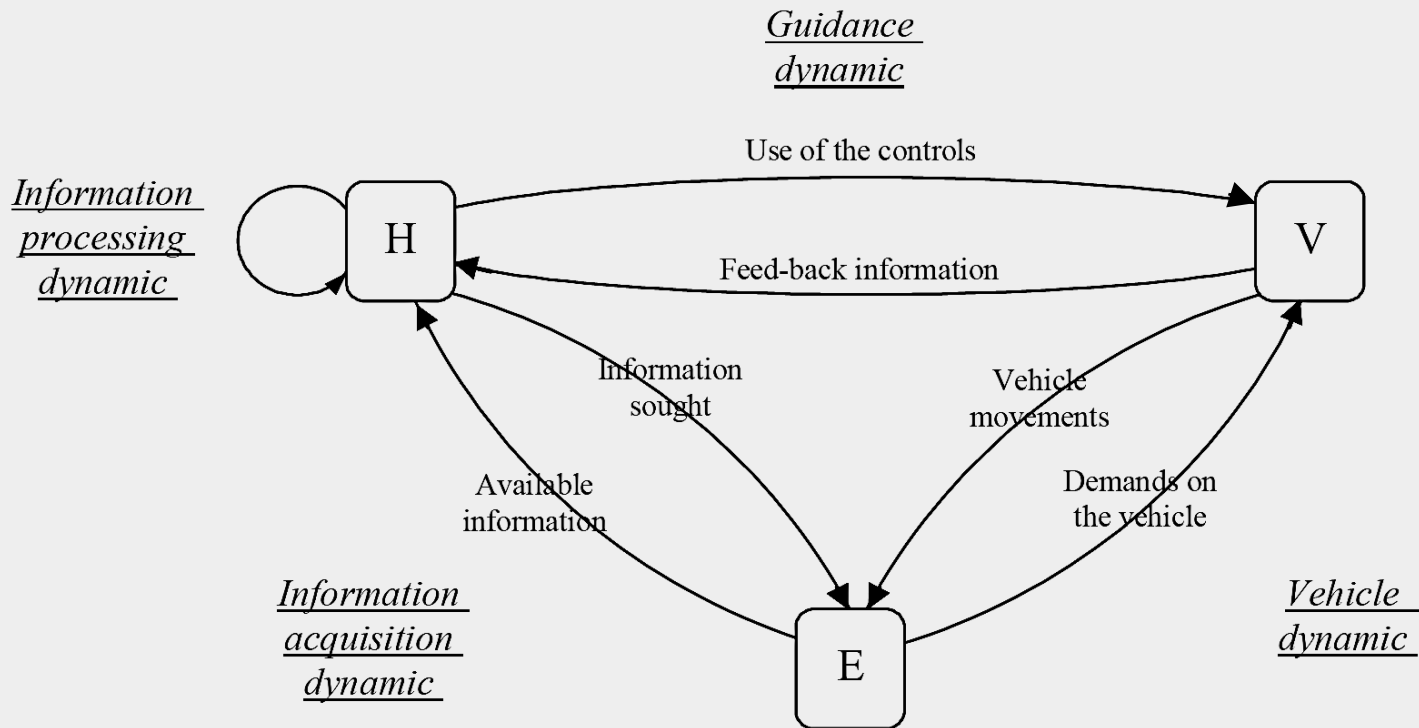


Figure 1: Interactions within the elementary Human-Vehicle-Environment system

trace-wp5-d5-1.pdf

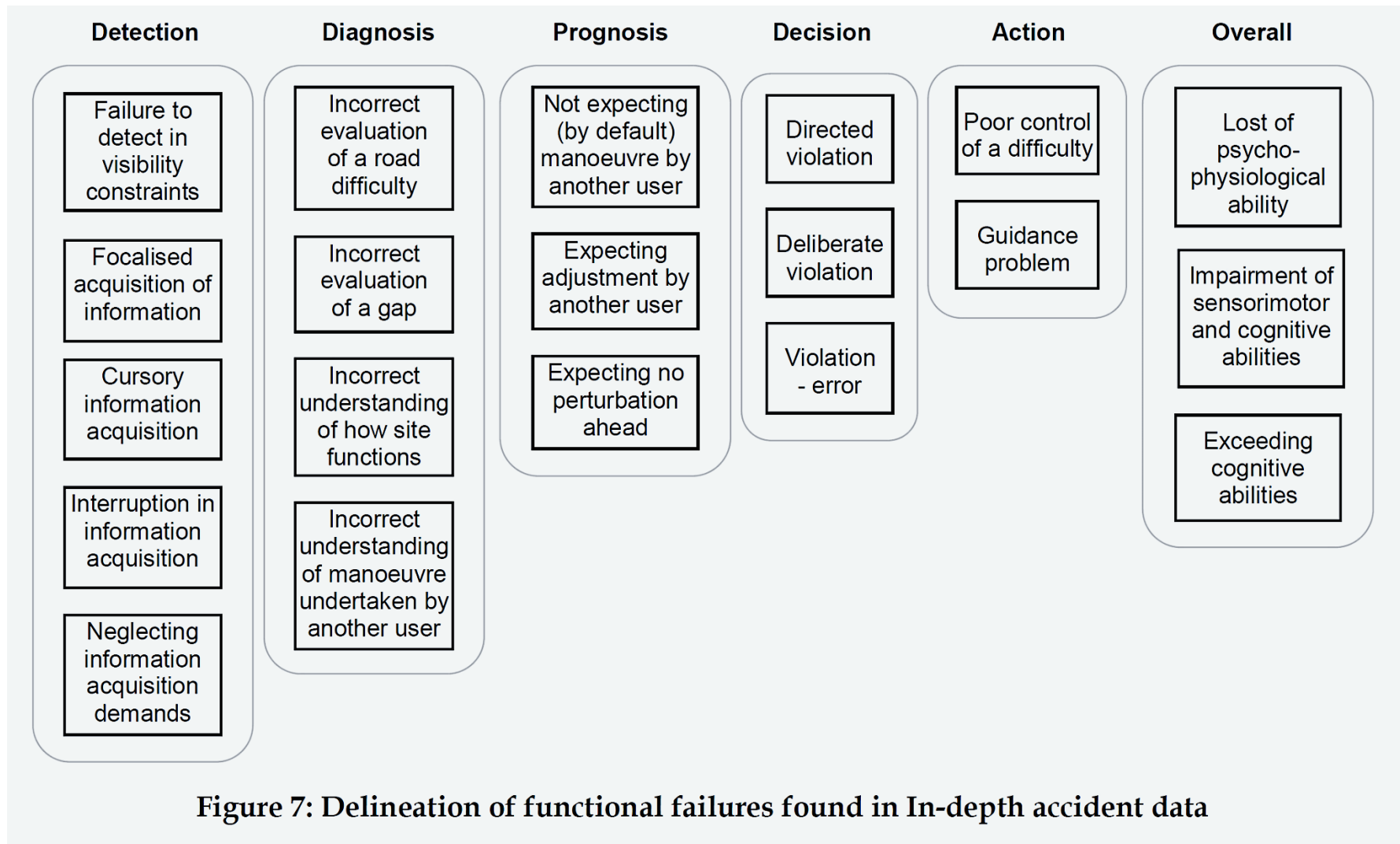


Figure 7: Delineation of functional failures found in In-depth accident data

trace-wp5-d5-1.pdf

NCHRP

REPORT 600

NATIONAL
COOPERATIVE
HIGHWAY
RESEARCH
PROGRAM

Human Factors Guidelines for Road Systems

Second Edition

TRANSPORTATION RESEARCH BOARD
OF THE NATIONAL ACADEMIES

Human Factors in Traffic Safety

Second Edition

Robert Dewar
and
Paul Olson



L&J Lawyers & Judges
Publishing Company, Inc.

SPEEDING AND AGGRESSIVE DRIVING

IMPAIRED DRIVING

OCCUPANT PROTECTION

DISTRACTED DRIVING



rweeks@azdot.gov

602-712-4382